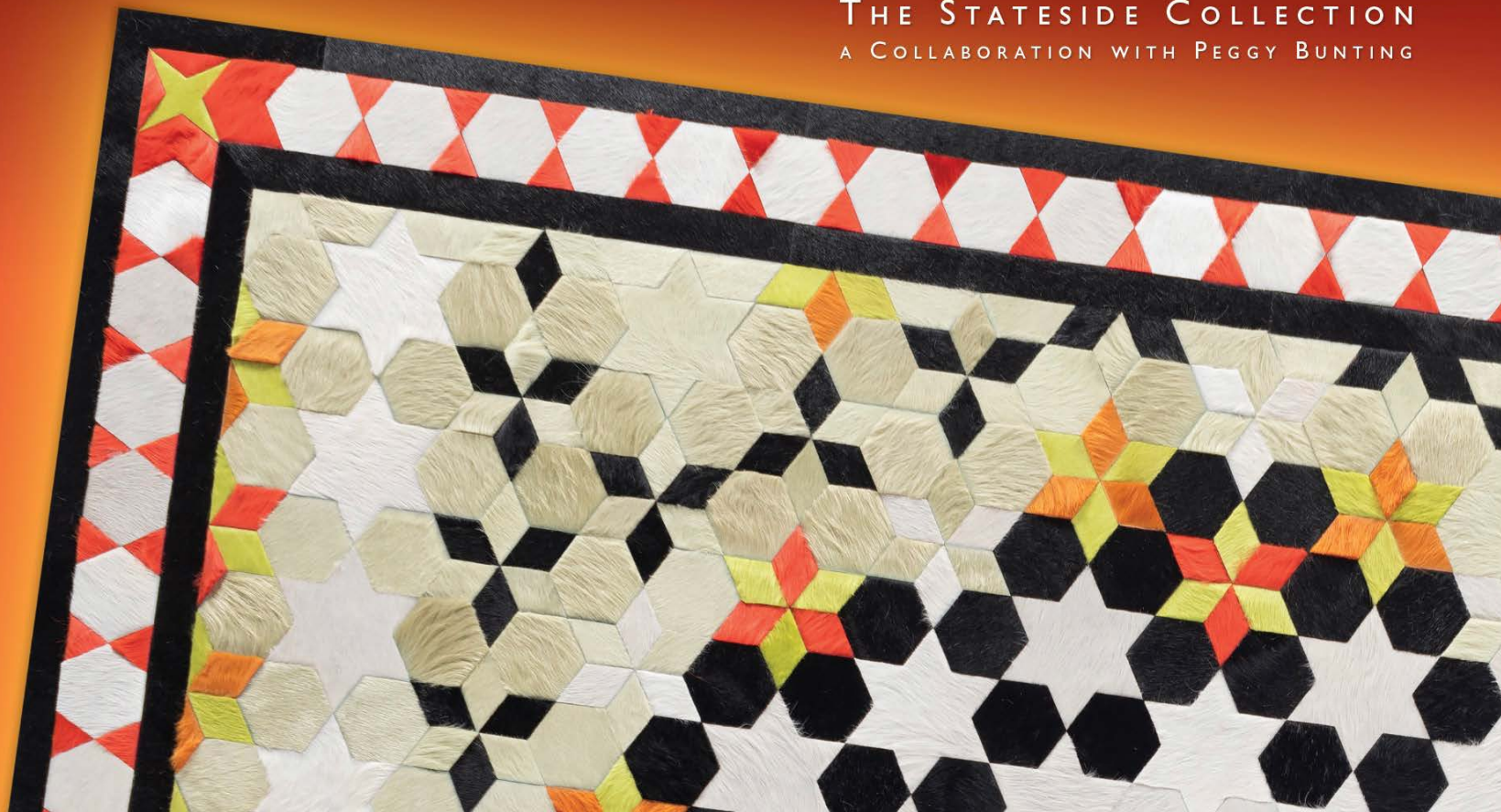


KYLE BUNTING

THE STATESIDE COLLECTION
A COLLABORATION WITH PEGGY BUNTING





A NEW COLLECTION

FROM KYLE BUNTING

STATESIDE

DEVELOPED WITH HIS MOTHER

PEGGY BUNTING

STATESIDE

STATESIDE, A NEW KYLE BUNTING COLLECTION CREATED IN COLLABORATION WITH KYLE'S MOTHER, PEGGY BUNTING, REVIVES, WITH HIDE, THE AESTHETIC OF TRADITIONAL AMERICAN QUILTS. HONORING THE INTRICACY AND CARE OF HER BELOVED MEDIUM, STATESIDE EXPANDS THE POSSIBILITIES OF COLOR AND DESIGN WITH A NEW AMERICAN-MADE CLASSIC.

QUILTS ARE A FUNCTIONAL AND DECORATIVE ART - A REMINDER OF THE HUMAN IMPULSE TO ENDOW EVEN THE MOST USEFUL OBJECTS WITH BEAUTY AND CREATIVITY. QUILT DESIGNS, STYLES, PATTERNS AND EVEN CONSTRUCTION TECHNIQUES TELL RICH STORIES OF THE CULTURE AND PEOPLE THAT CREATE THEM. STATESIDE, LOOSELY DESIGNED FROM PEGGY'S PERSONAL STORY AND EXPERIENCE, IS NO DIFFERENT.

WHEN KYLE BUNTING APPROACHED HIS MOTHER FOR THE PROJECT, THE IMPORTANCE OF QUILTS AND THEIR MEANING WERE FRONT-OF-MIND. WHAT WAS AN ORIGINAL TECHNIQUE FROM HIS LATE FATHER, JIM, WHO PIECED HIDES TOGETHER AS AN ARTIST, IS NOW THE PROPRIETARY TECHNIQUE EMPLOYED IN ALL OF KYLE'S RENOWNED RUGS. THAT THIS EFFORT WAS EMBRACED TO BRING STATESIDE AND HIS MOTHERS VISION TO REALITY, MAKES IT THAT MUCH SWEETER.





“QUILTING IS AN OLD CRAFT — THIS COLLECTION ADDS TO THAT HISTORY. WITH A MIX OF TRADITIONAL AND CONTEMPORARY DESIGNS, I HOPE STATESIDE WILL LEAVE PEOPLE CHERISHING THE IMPORTANCE OF QUILTING AND HOW THIS WORK TELLS A STORY OF OUR HISTORY AND MY OWN.”

— PEGGY BUNTING



CROSSROADS

FROST HAD IT RIGHT

THE PISGAH COVERED BRIDGE IN NORTH CAROLINA IS A PLACE CLOSE TO WHERE I GREW UP WHERE I CAME OFTEN AS A CHILD. IT'S AN IDYLIC SETTING, BUT ALSO A QUIANT REMINDER OF HOW CHOICES CAN FORM LIFE'S EARLY LESSONS. FOR ME, CROSSROADS SYMBOLIZES CHOICE, AND LIKE FROST'S ROAD LESS TRAVELED, THAT PATH, HAS INDEED MADE ALL THE DIFFERENCE.

— PEGGY BUNTING















CAROUSEL

SMILING THROUGH THE SPINS

WHEN OUR FAMILY WAS YOUNG, WE'D OFTEN TAKE TRIPS TO THE CAROLINA COAST. BACK THEN THERE WAS A LOT LESS TO SEE AND DO THAN THERE IS NOW. SIMPLER TIMES, AND A QUIETER PLACE TO EXPERIENCE THAT PURE JOY THAT CHILDREN SEEM TO UNDERSTAND BEST. CAROUSEL HARKENS BACK TO THOSE DAYS WHEN THE MOMENT OF YOUTH BROUGHT A SPLASH OF EXCITEMENT AND WONDER.

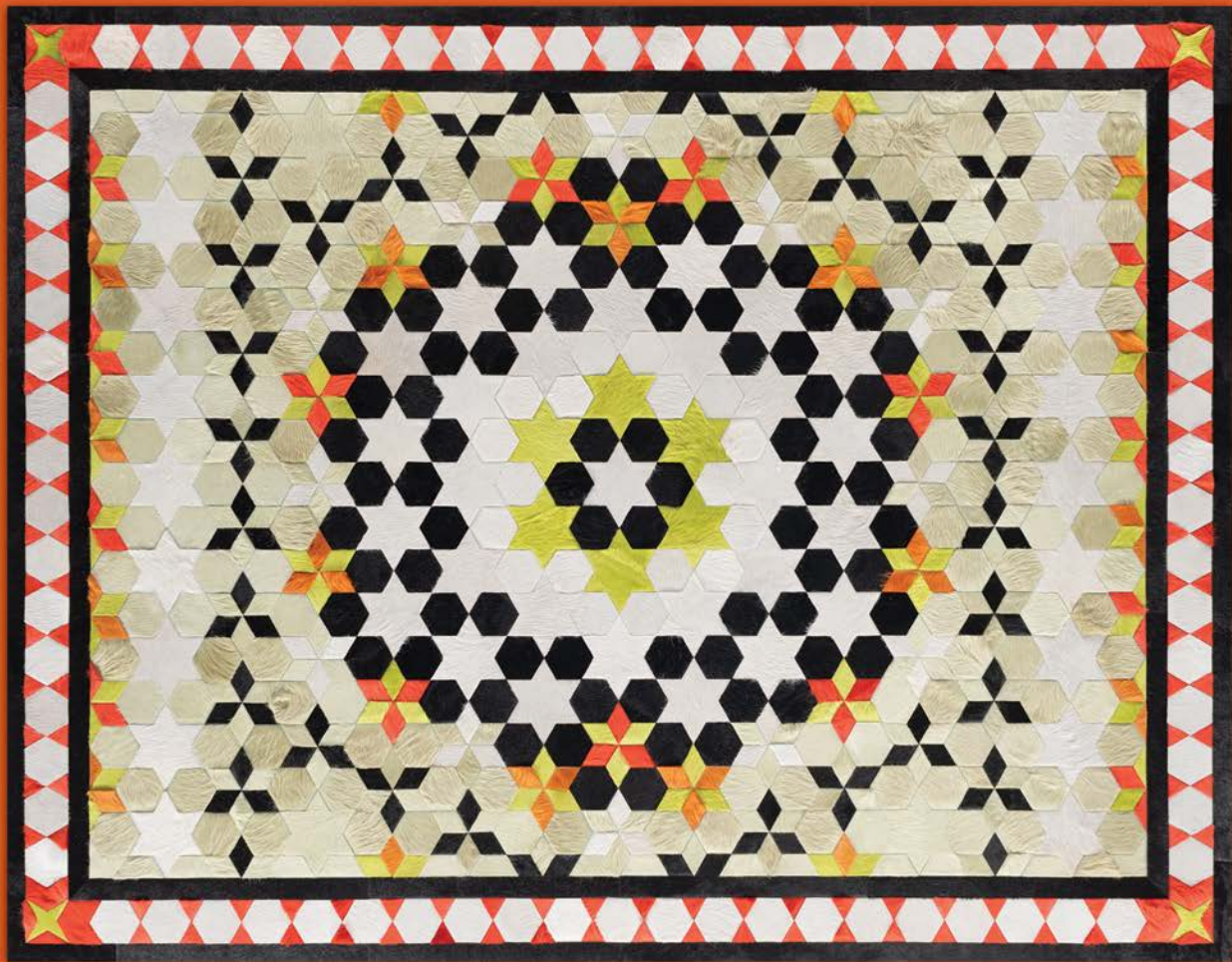
— PEGGY BUNTING



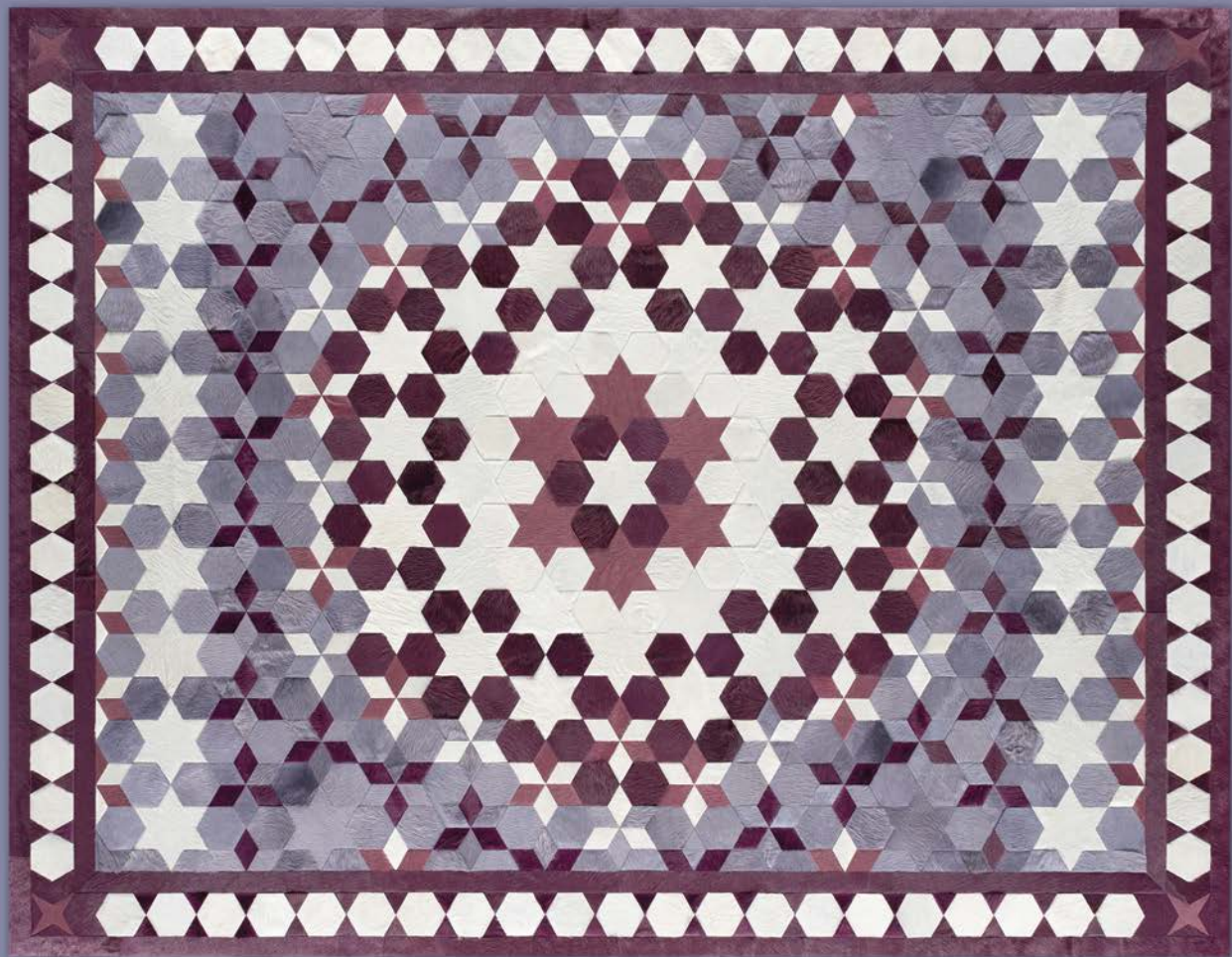












WHIRLWIND

STEADY IN THE STORM

THE SMOKY MOUNTAINS OF NORTH CAROLINA, KNOWN FOR THEIR FREQUENT, LOW-LYING CLOUDS THAT RISE UP LIKE SMOKE FROM THE TREETOPS, ARE OFTEN ASSOCIATED WITH THE UNKNOWN. FOR MY FAMILY THAT CONNOTATION HOLDS TRUE. A BRIEF STAY IN THIS MYSTERIOUS PLACE BROUGHT AN OPPORTUNITY MASKED AS A CHALLENGE. WHIRLWIND REPRESENTS THE SENSE OF FEAR AND UNCERTAINTY THAT COMES WITH FACING LIFE'S DEFINING MOMENTS.

— PEGGY BUNTING

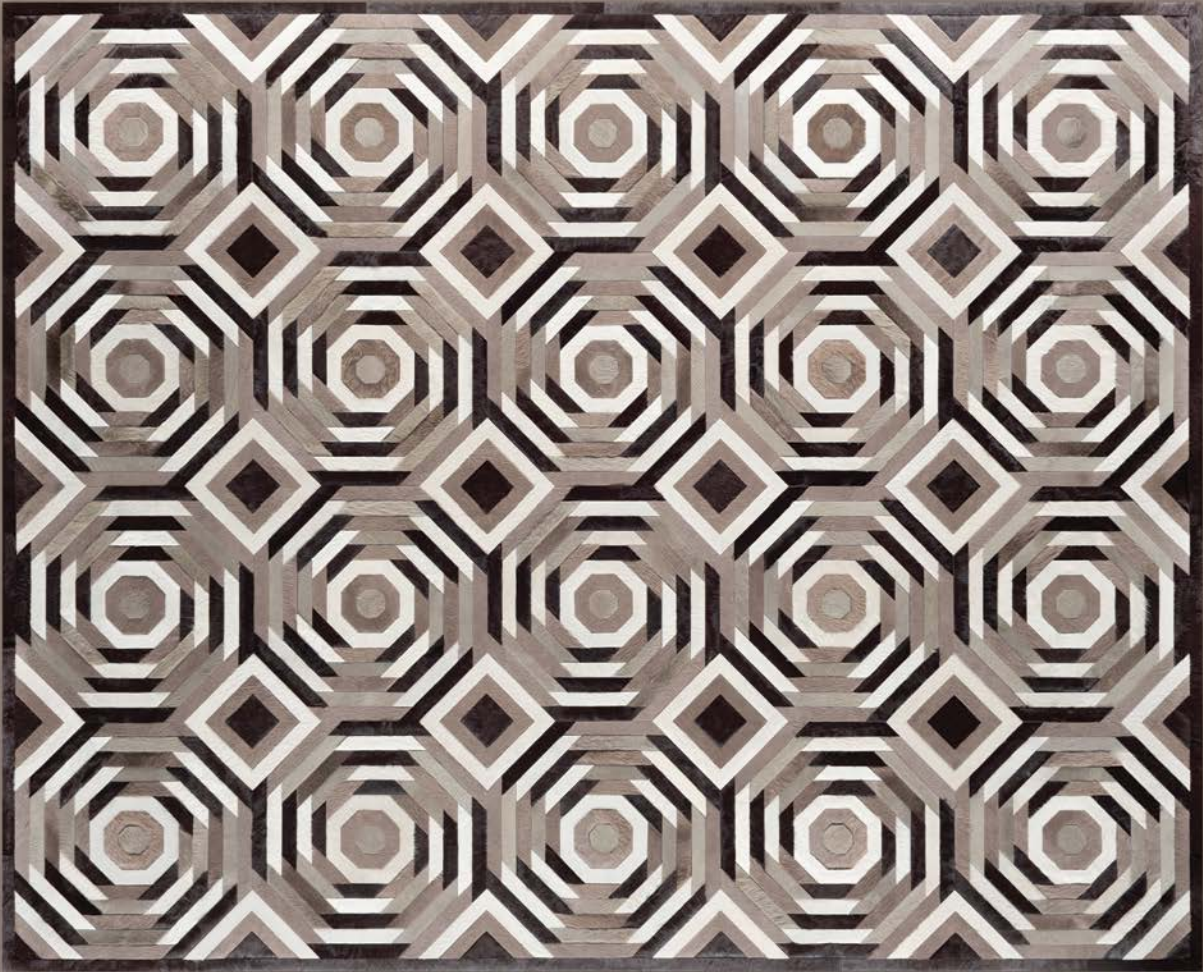














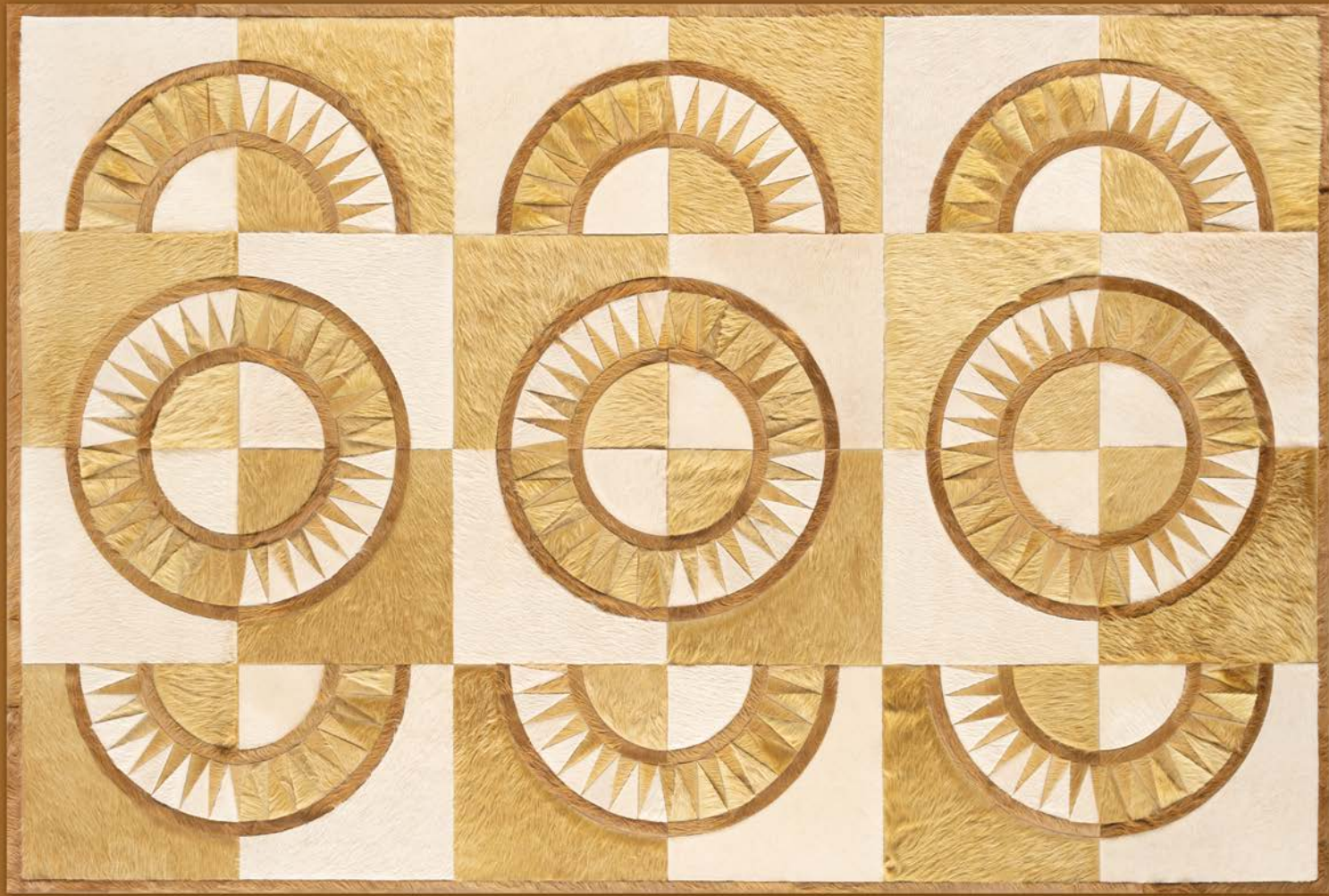
COMPASS

LOVE YOUR GUIDE

BIG MOVES ARE SCARY, BUT THOSE MOVES OFTEN PUT US EXACTLY WHERE WE'RE MEANT TO BE. FOR ME, TEXAS REPRESENTS BOLDNESS, AND COMPASS, A METAPHOR FOR THE LOVE, TRUST AND COMMITMENT I PUT IN THE LOVE OF MY LIFE TO TAKE US THERE. LOVE ASKS US TO EMBRACE RISK AND VENTURE TOWARD PLACES AND FEELINGS THAT MIGHT BE UNCOMFORTABLE. BUT, THAT'S HOW IT WORKS: WHEN THE ARROW POINTS TRUE, COMMIT TO YOUR GUIDE, STAY THE COURSE, AND NEVER, EVER LOOK BACK.

— PEGGY BUNTING



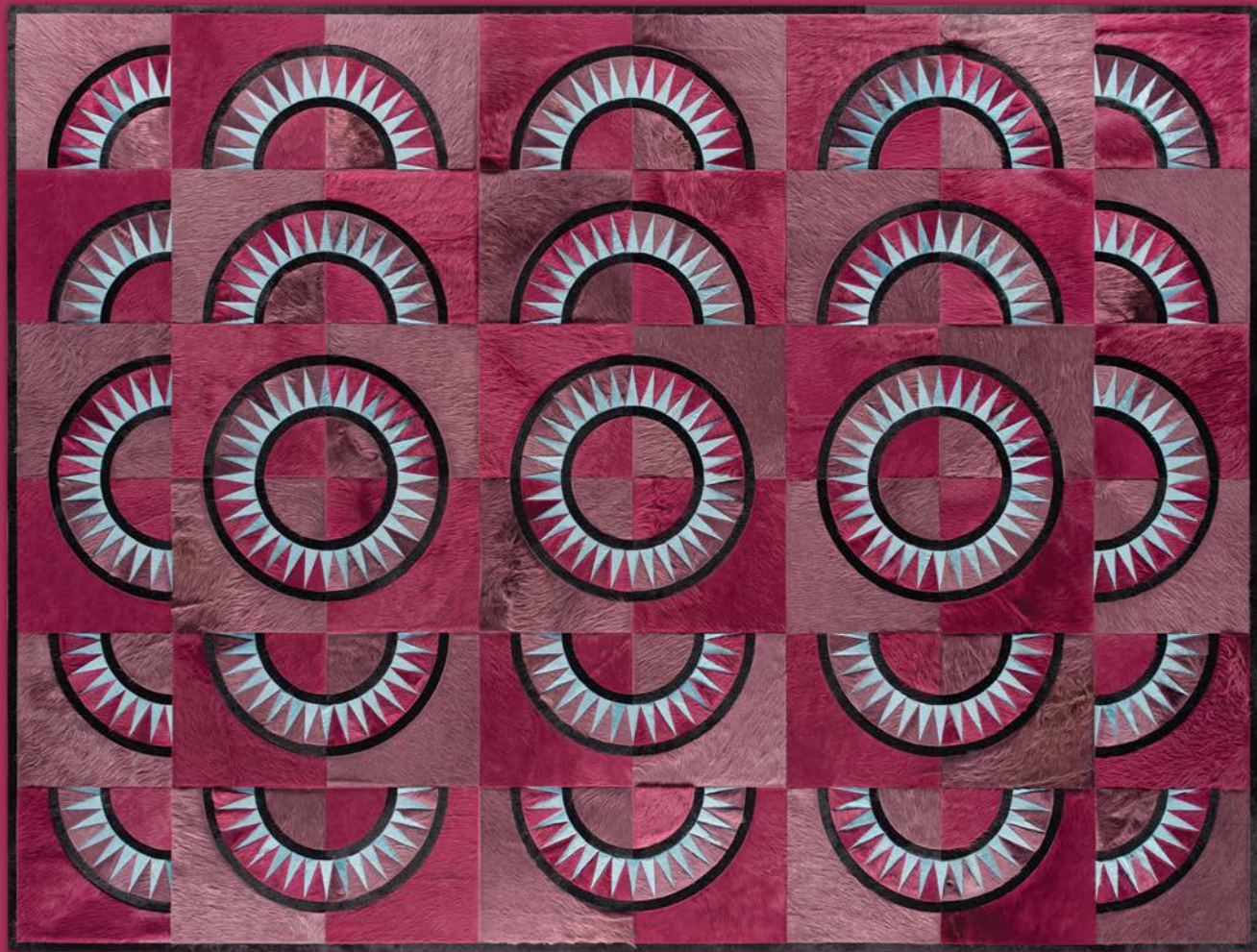












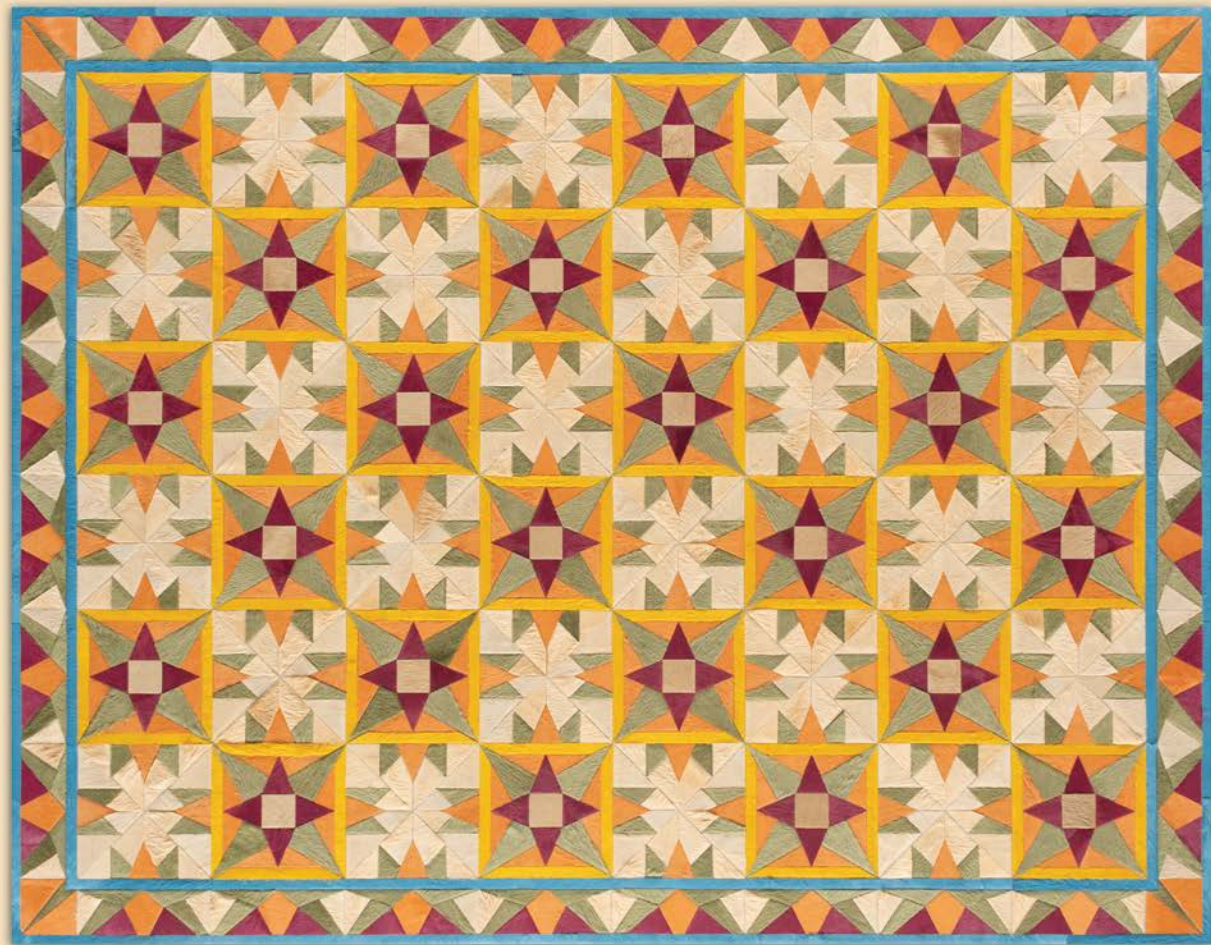
FANCY

POLISHING THE PATINA

IN 2000, JIM & I BUILT A HOUSE IN MONTANA, JUST OUTSIDE HELENA. SPACIOUS AND OPEN, THE HOUSE WAS GRACEFULLY PLACED WITH VIEWS OF THE CONTINENTAL DIVIDE. THE HOUSE WASN'T LARGE, OR ELEGANTLY APPOINTED, BUT TO US IT WAS HEAVEN, OR AS CLOSE AS EARTH GETS. WITH ITS ROYAL ROOTS, FANCY REPRESENTS THAT MOMENT WHEN YOU FEEL LIKE YOU'VE FINALLY ARRIVED AT THAT PLACE YOU NEVER KNEW YOU WERE ALWAYS MEANT TO BE.

— PEGGY BUNTING















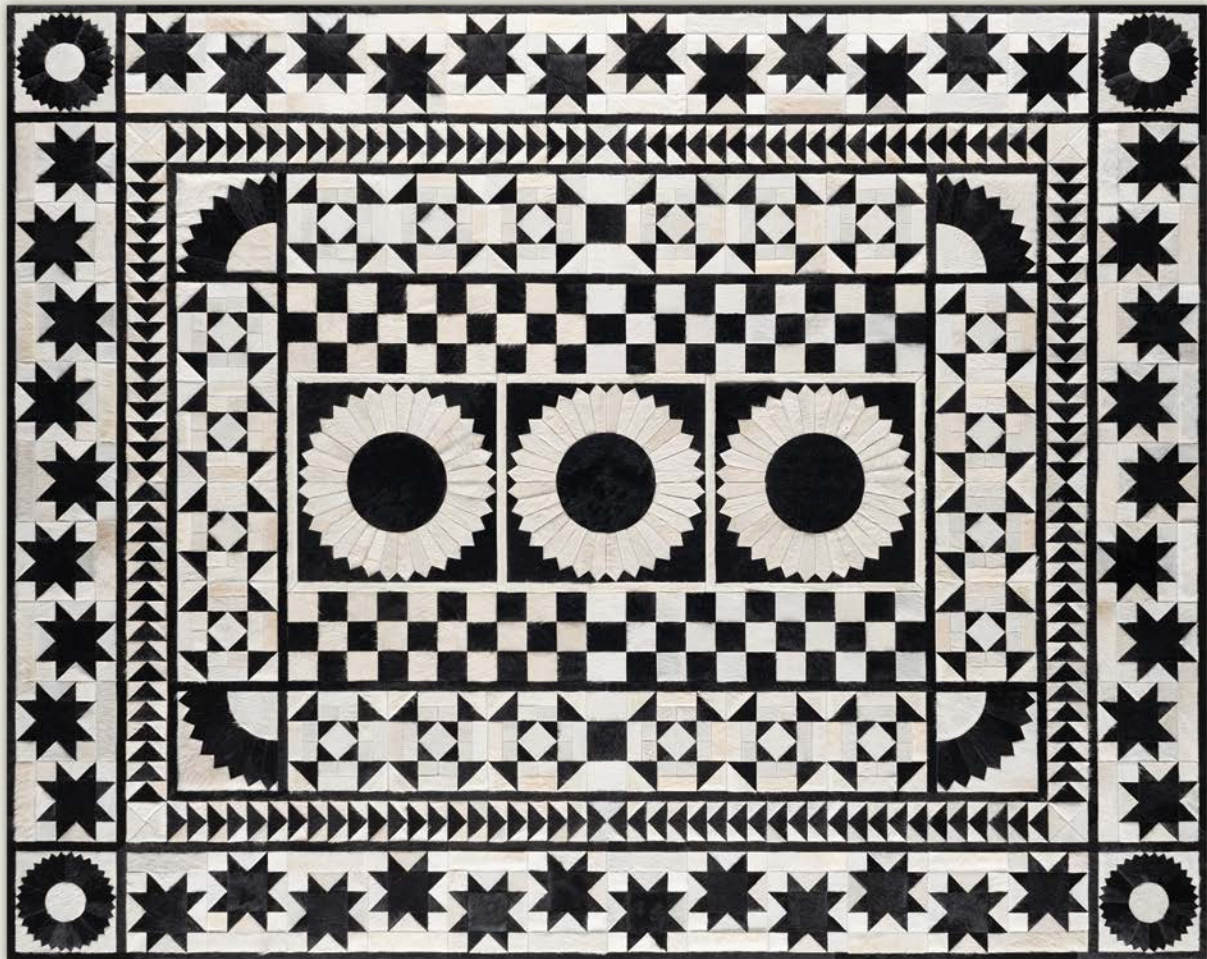
LADY

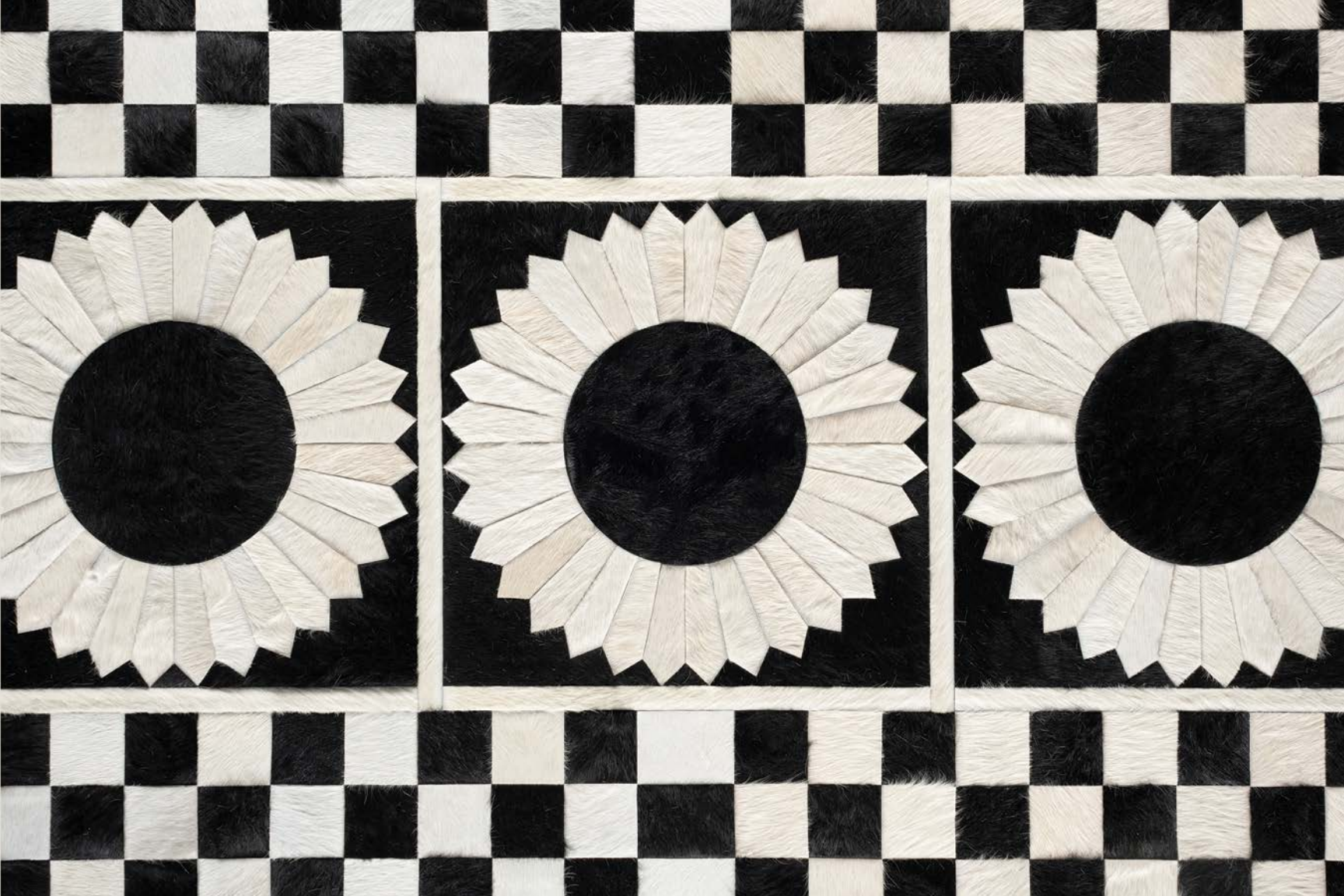
ALL THAT AND MORE

IN HER TWILIGHT, MOM, MY LADY, LIVES IN AUSTIN. THIS PLACE, AND THE SURROUNDING HILL COUNTRY, IS SPECIAL TO US, WE LIVE HERE, AS DOES OUR BUSINESS. LIKE HER, LADY IS A CELEBRATION OF THE JOY AND GRATITUDE ONE FEELS AND THE GRACE THEY EXHIBIT FOR THE BLESSINGS WITH WHICH WE'VE BEEN BESTOWED. MUCH LIKE SPRING'S BLUEBONNETS, THIS CREATIVE AND COLORFUL DESIGN HAS A CARE-FREE NATURE THAT GENEROUSLY GIVES PREDICTABLE ENCOURAGEMENT AND EXPRESSION, MUCH LIKE THE WOMAN HERSELF.

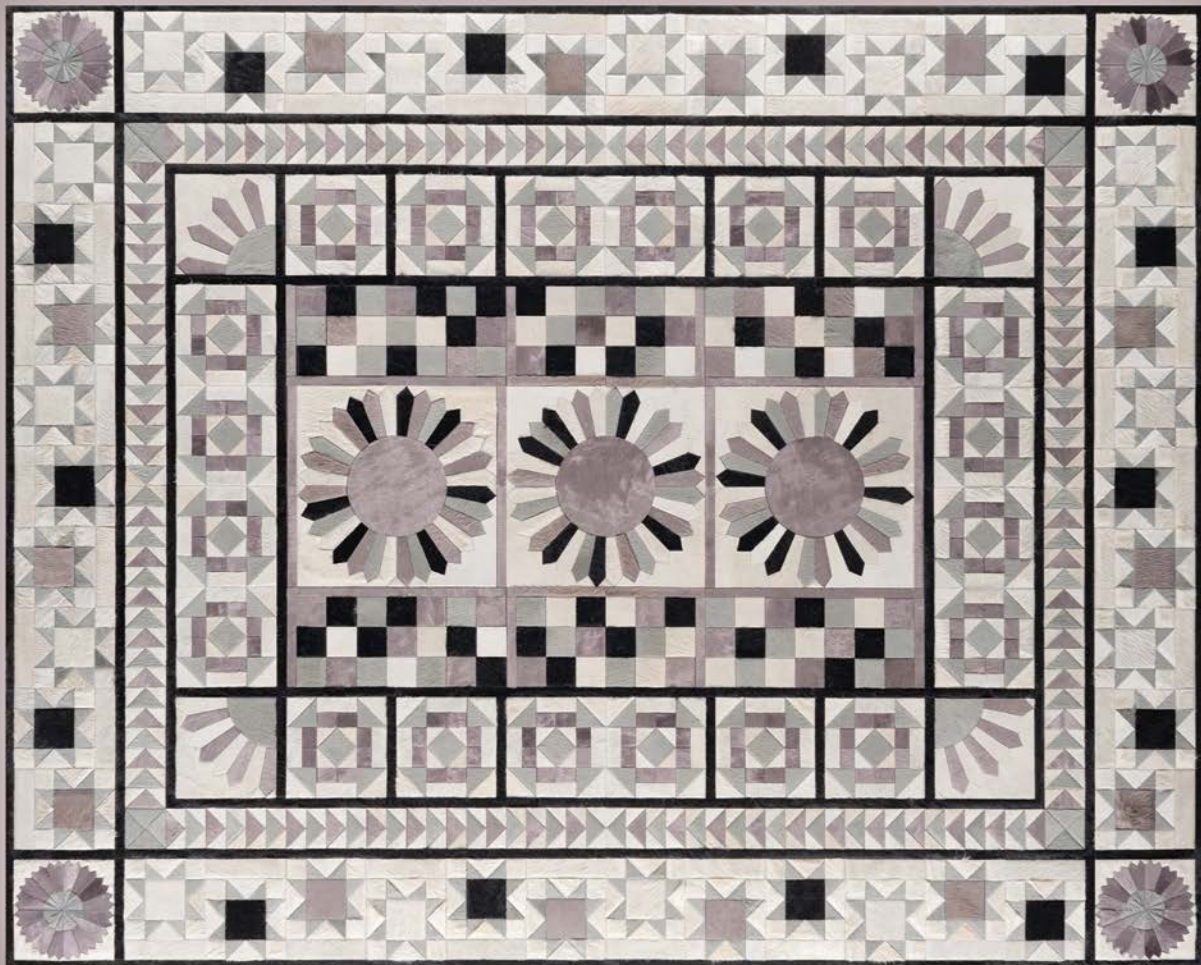
— KB













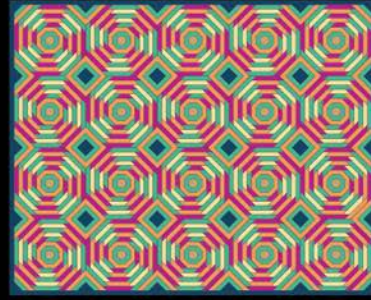
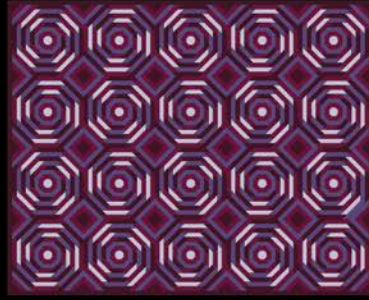
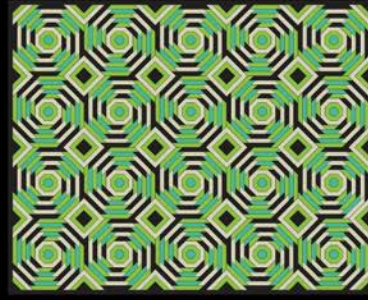
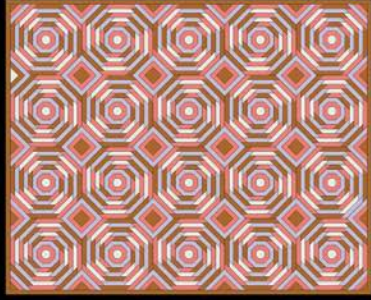




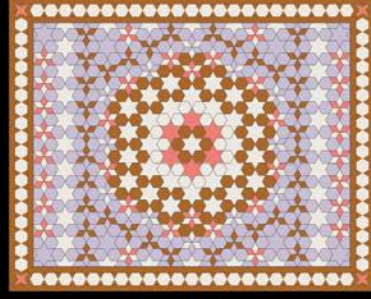
“WORKING ON THIS COLLECTION WITH MY MOTHER HAS BEEN ONE OF THE MOST REWARDING EXPERIENCES OF MY CAREER. TOGETHER WE DESIGNED DOZENS OF COLORWAYS OVER THE SPAN OF A YEAR. FINALLY, WE SETTLED ON THE 18 RUGS YOU SEE HERE. OF COURSE THESE RUGS CAN BE CUSTOMIZED IN ANY POSSIBLE COLOR, SHAPE, OR SIZE. I ENCOURAGE YOU TO TAKE A MOMENT TO EXPLORE SOME OF THE DESIGN WORK THAT ULTIMATELY LED TO WHAT WE CALL STATESIDE.”

– KB

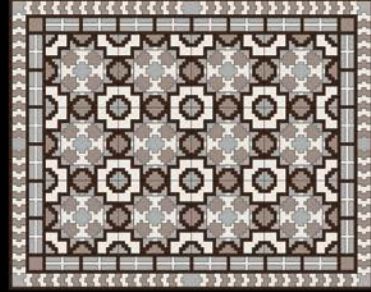
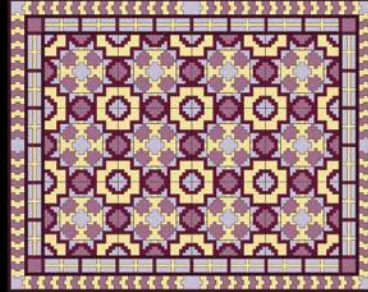
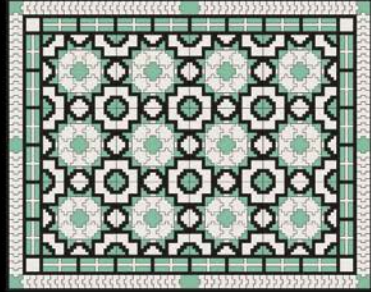
WHIRLWIND

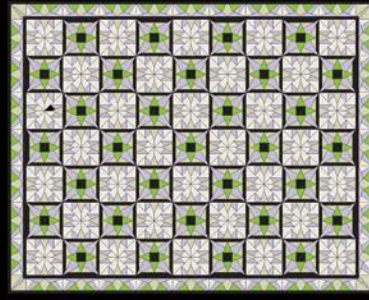
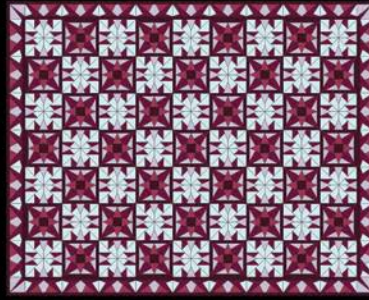
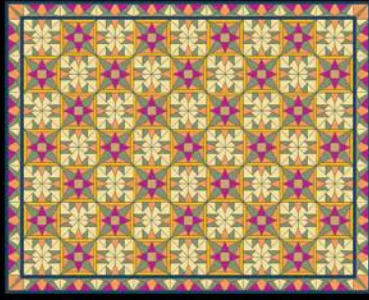


CAROUSEL

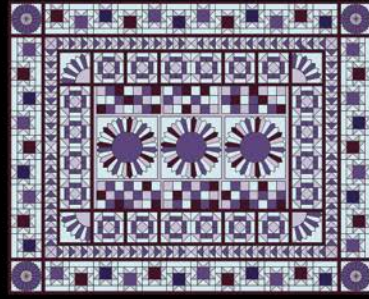
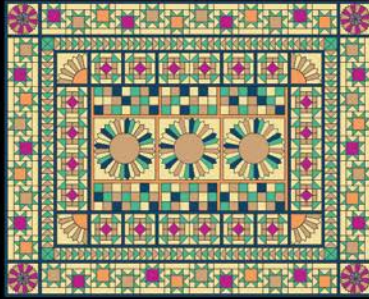


CROSSROADS

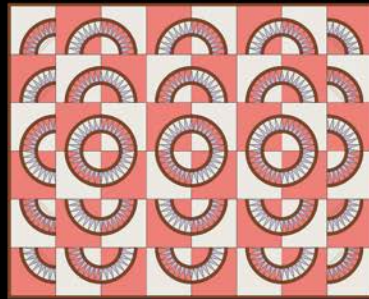
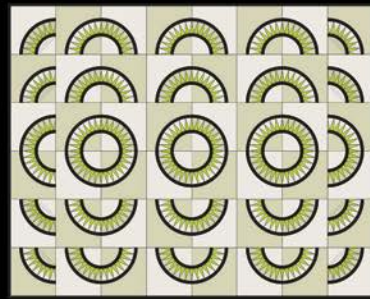
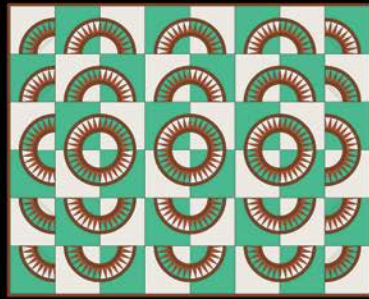
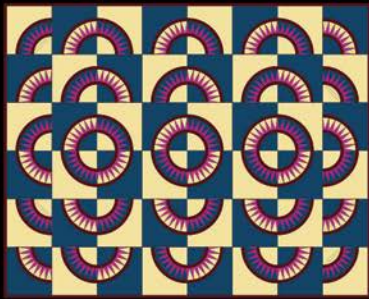




FANCY



LADY



COMPASS

“MY MOM WAS A QUILTER. THAT’S WHERE I WAS FIRST EXPOSED TO THE WORK. BUT WHAT I DO NOW IS SO DIFFERENT, SOMETHING I’VE MADE MY OWN. WHAT WE HAVE IN COMMON, HOWEVER, IS THE JOY OF SHARING OUR WORK AND EFFORTS WITH OTHERS. WHICH IN LARGE PART, FOR QUILTERS, IS SOMETHING INHERENT TO THE EFFORT — COMMUNITY AND GIFT.

MY HOPE IS THAT THIS COLLECTION WILL BE EMBRACED, INSPIRING JOY AND APPRECIATION. AND THAT PERHAPS THESE PIECES WILL BECOME HEIRLOOMS OF YOUR OWN. PERHAPS THEY WILL REPRESENT A QUAIN REMINDER OF TIMELESSNESS, SOMETHING IN THE HISTORICAL FABRIC OF US ALL.”

— PEGGY BUNTING



TAKING A MOMENT TO THANK THOSE WHOSE EFFORTS MADE STATESIDE POSSIBLE.

TO TRAVIS ROSE AND TRAVIS BELL, THE TRAVIS WE CALL THEM HERE AT KB, A BOATLOAD OF GRATITUDE FOR THE DESIGN AND PRODUCT PHOTOGRAPHY EFFORTS WITHOUT WHICH, THIS JUST WOULDNT HAVE HAPPENED.

TO WAYNE AND RYAN, AND THE WHOLE PRODUCTION TEAM, THANK YOU! I KNOW MAKING THE NEW STUFF AND PULLING IT OUT OF SCRAPS ISN'T EASY. YOUR DETERMINATION AND GRACE WERE NOTICED.

AS ALWAYS, A MASSIVE HUG TO GRANT PETERSON FOR HIS OUTSTANDING GRAPHIC DESIGN WORK. GRANT YOU ARE THE MASTER OF YOUR CRAFT. AND THANK YOU FOR YOUR PATIENCE - ALL 20 YEARS OF IT.

AND TO THE INCOMPRABLE KRISTEN KILPATRICK, WHOSE HEART IS FAR BETTER THAN HER SHOTS, THE PHOTOGRAPHY IS PERFECT. BUT IT'S YOUR UNFORGETTABLE MANNER THAT WON THE DAY.

AND TO MY SWEET DEPARTED FATHER JIM BUNTING, THANK YOU FOR MARRYING PEGGY AND FOR YOUR GIFT. I CANNOT IMAGINE DOING ANYTHING ELSE OR HAVING LIVED THIS LIFE WITHOUT HER.

AND MOM, THANK YOU FOR BEING EVERYTHING ANYONE COULD EVER ASK FOR IN A MOTHER. IT'S AN HONOR TO BE YOUR SON. I AM A VERY, LUCKY MAN.

- KB



LEARN MORE AT [KYLEBUNTING.COM/STATESIDE](https://kylebunting.com/stateside)



INSTAGRAM: @KYLEBUNTING



FACEBOOK: @KYLEBUNTINGINC



TWITTER: @KYLEBUNTING



PINTEREST: KYLE BUNTING

KYLE BUNTING

THE EXTRAORDINARY IN HIDE