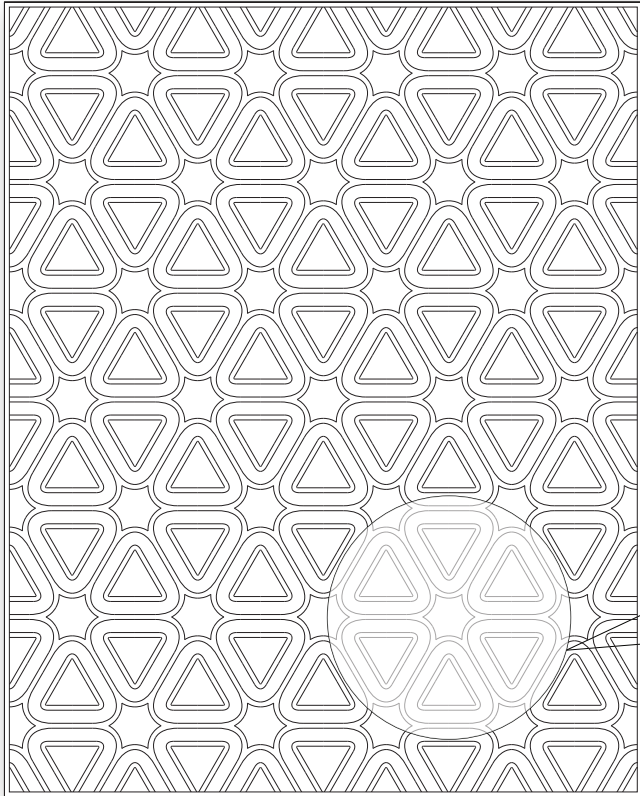


# KYLE BUNTING



## L A Y L A

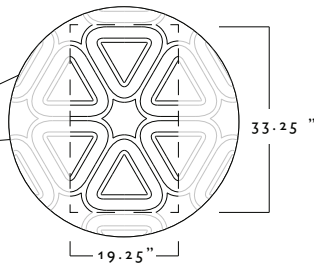
© 2012

THIS IS THE MOST HOLISTIC FLORAL SHAPE IN GEOFFREY BRADFIELD'S THREE-PART SERIES DESIGNED WITH KYLE BUNTING. THE SCALE AND PROPORTIONS OF EACH PATTERN IN HIS COLLECTION ARE RELATIVELY SIMILAR, GIVING THEM A COHESIVE RANGE. IN LAYLA, ADJACENT TRIANGLES COME TOGETHER IN A CIRCLE TO FORM THE CREATOR'S MUSE: THE ROSE.

AVAILABLE IN ANY SIZE, SHAPE, OR COLOR FOR RUG OR WALL.

STANDARD REPEAT: 19.25" x 33.25"

STANDARD BORDER: 0.75"



### SIZE GUIDE / POPULAR SIZES

	WIDTHS		LENGTHS	
STANDARD	5 FT	x	8 FT	
STANDARD	6 FT	x	9 FT	
STANDARD	8 FT	x	10 FT	
STANDARD	9 FT	x	12 FT	
STANDARD	10 FT	x	14 FT	

THE STANDARD PATTERN REPEAT FOR THIS DESIGN INCREASES IN 19.25" x 33.25" INCREMENTS BUT THE PATTERN CAN BE CROPPED TO ANY SIZE, THEREFORE THERE ARE NO STANDARD SIZING INCREMENTS. IN MOST CASES THIS DESIGN CAN BE SPECIFIED FOR ANY SIZE.